

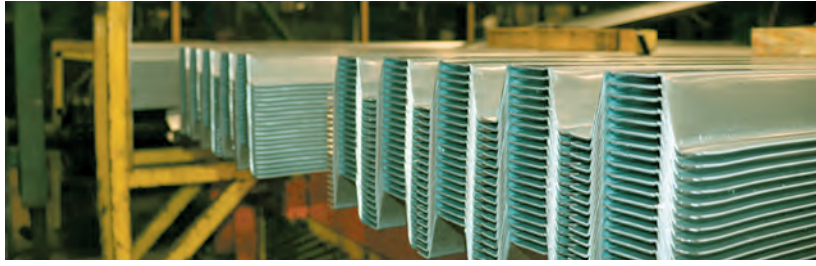


Trusted products.
Reliable people.
Dependable performance.



▶ YOUR TRUSTED SOURCE

Competitive prices, on-time deliveries, and reliable customer service are just a few of the reasons **Gregory Tube** is your trusted source for steel tubing and metal building accessories. We pride ourselves not just on the quality of our products, but also on the quality of our people.



DEPENDABLE STEEL TUBING SOLUTIONS

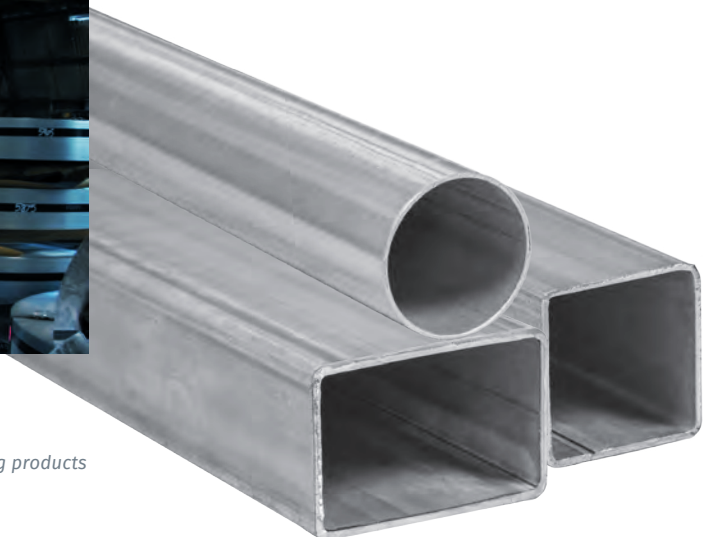
At Gregory Tube, we're backed by 100 years of manufacturing expertise. Our 120,000 square foot facility provides a full range of tube sizes for a variety of applications:

- ▶ Steel buildings and carports
- ▶ Residential and commercial roll-up doors
- ▶ Agriculture, steel racking and highway safety

All made in America, our proven experience in both batch dip and continuous galvanizing increases the longevity of our steel products.

Need something special?

Our legacy of excellence in roll-formed steel products allows us to offer customization options, too. We provide cut-to-length parts, in lengths from 6 to 120 inches, and UV coating or acrylic coatings are available by request.



Round, rectangular and square tubing products



Your one-stop shop for metal building construction

When you need to build commercial structures from the ground up, **Gregory Tube** is your go-to partner. You provide the exterior metal. We provide the rest.

| TUBE SIZE | WALL THICKNESS |
|---------------------|------------------|
| .995" O.D. | 16 ga. to 11 ga. |
| 1.660" O.D. | 16 ga. to 12 ga. |
| 2.00" sq. | 16 ga. to 11 ga. |
| 2.250" sq. | 16 ga. to 12 ga. |
| 2.500" sq. | 16 ga. to 12 ga. |
| 1.75" x 2.75" rect. | 16 ga. to 12 ga. |
| 2" x 3" rect. | 16 ga. to 12 ga. |

Also available:

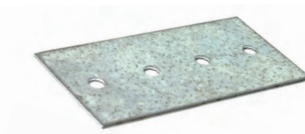
- 1 3/4" x 2 3/4" cut-to-length stubs 6" - 24"
- 2" square cut-to-length stubs 6" - 24"
- 2 1/4" square cut-to-length stubs 6" - 24"

Slit coil for roll forming requirements: gauge and width as requested

Contact us today
to request a quote.
gregorytube.com



#4 grade 60 rebar spikes
Hot-roll, 30", 36" and 42" available



2" x 4" galvanized flat brackets with four pre-drilled holes
14 ga.



2" x 4" galvanized angle brackets with four pre-drilled holes
14 ga.



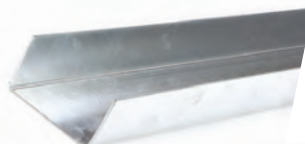
Double bend
24", 2 1/2" sq. x 14 ga.



Single bend
24", 2 1/2" sq. x 14 ga.



Straight tube
See table for available sizes



U-channel supports
18 ga., 2 1/4" and 2 1/2"
2' to 20'



Hat channel
18 ga., Available in 1 1/2" profile



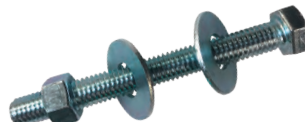
Custom fabricated base rails with pre-drilled 5/8" holes
Inquire for gauges and dimensions



Single helix ground anchor
30" long, 1/2" rod with eye



Double helix ground anchor
30" long, 5/8" rod with eye



Anchor bolt assembly
4.5" bolt with washers and nut



715 Willo Industrial Dr, Decatur, AL 35601 330-477-4800

gregorytube.com