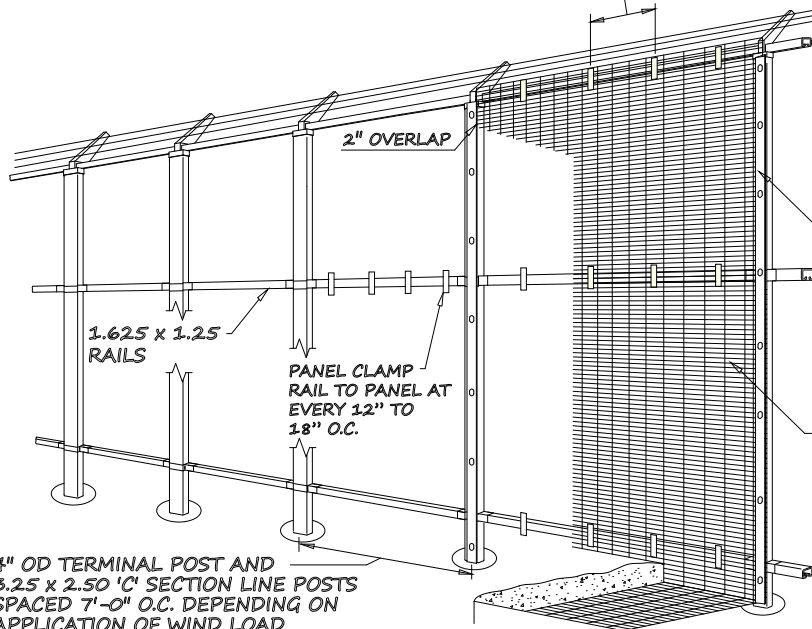


RAIL TIE SPACING 24"

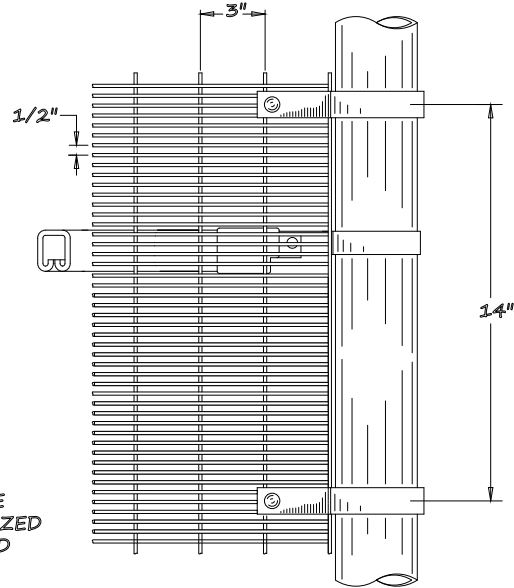
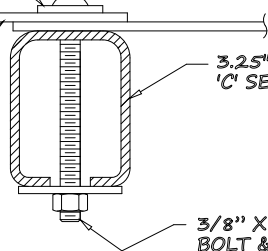


4" OD TERMINAL POST AND 3.25 x 2.50 'C' SECTION LINE POSTS SPACED 7'-0" O.C. DEPENDING ON APPLICATION OF WIND LOAD SPECIFIED IN M.P.H.

3/16" X 2" STEEL COVER STRAP W/SLOTS 12" O.C.

10" x 36" ANTI-DIG GRID 1/2" x 2" x 10 1/2 GA. PCV COATED OR 18" BURIED VERTICAL

WELDED WIRE FABRIC OVERLAP 1-1/2" AT LINE POST



END/CORNER CONNECTION

ITEM	QNTY	DESCRIPTION		MATERIAL
		MACHINING TOLERANCES		FABRICATION TOLERANCES
SCALE	NONE	CHK'D BY	DTM	0.1 ± 0.030 UNDER 18" ± 1/32
DWN BY		DTM01-01-17	APP'D BY	0.01 ± 0.015 18" AND OVER ± 1/16
		ANGLES		± 0.005 ± 1/48 ALL MACHINED SURFACES 125° BREAK ALL SHARP EDGES
SUPER 'C' with BARB WIRE, ROUND TERM. COVER STRAPS (WELDED WIRE)				
CAD FILENAME: FENCE 4-11		 GREGORY FENCE 4100 13th Street SW Canton, Ohio 44710		REF. No. DRWG No.
LAST PLOT DATE: 09/01/17				FENCE 4-11