

COATINGS:

FRAMEWORK-COATED PER (ASTM-F-1043) TYPE A

BENDING FORCE ON THE X-X AXIS:

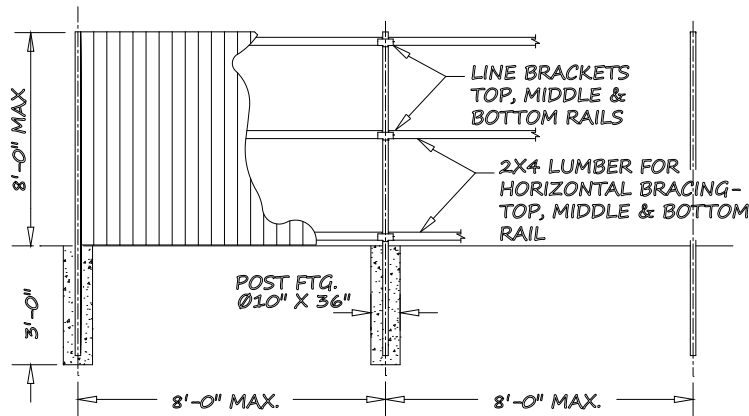
LINE POST=351 LBS @ 8'-0" ABOVE GRADE

DRIVING OPTIONS:

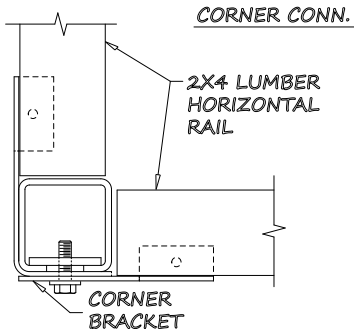
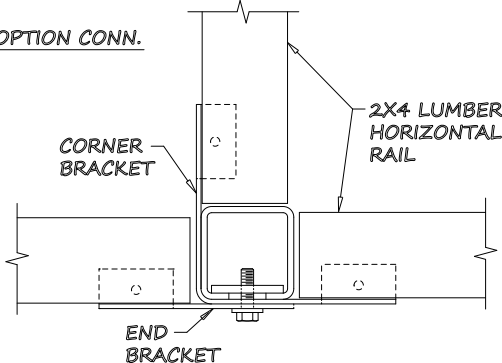
IF POST ARE DRIVEN IN LIEU OF CONCRETE SET, DRIVE 3' MIN. INTO THE GROUND.

POST HEIGHT ABOVE GROUND:

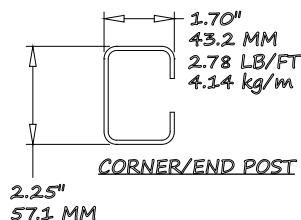
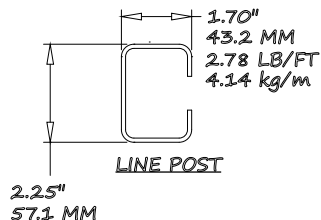
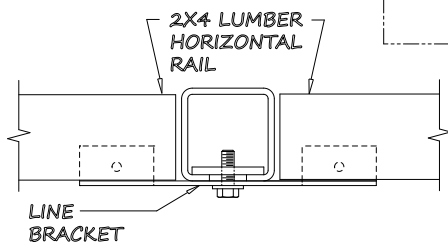
MAX PICKET HEIGHT FOR HEAVY C POST IS 8'-0".



T-OPTION CONN.



LINE POST CONN.



ITEM	QNTY	DESCRIPTION		MATERIAL
		MACHINING TOLERANCES		FABRICATION TOLERANCES
SCALE	NONE	CHK'D BY	DTM	UNDER 18" ± 1/32
DWN BY	DTM01-14-17	APP'D BY		18" AND OVER ± 1/16
		ANGLES		± 0.005
				± 1/4"
BREAK ALL SHARP EDGES				

HEAVY 'C' - VERTICAL PICKETS-WOOD

CAD FILENAME:
FENCE 4-24
LAST PLOT DATE:
09/14/17

GREGORY
FENCE
4100 13th Street SW
Canton, Ohio 44710

REF. No.
DRWG No.

FENCE 4-24