

COATINGS:

FRAMEWORK-COATED PER (ASTM-F-1043) TYPE A

BENDING FORCE ON THE X-X AXIS:

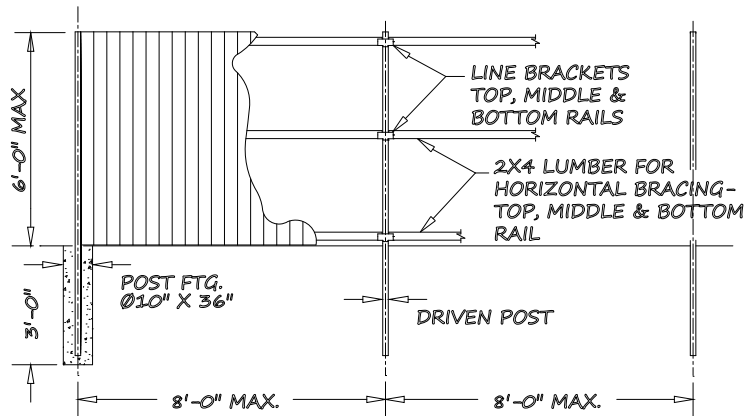
LINE POST=263 LBS @ 6'-0" ABOVE GRADE

DRIVING OPTIONS:

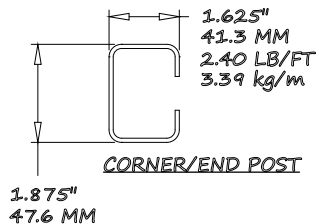
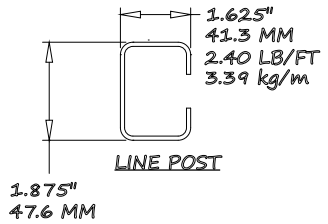
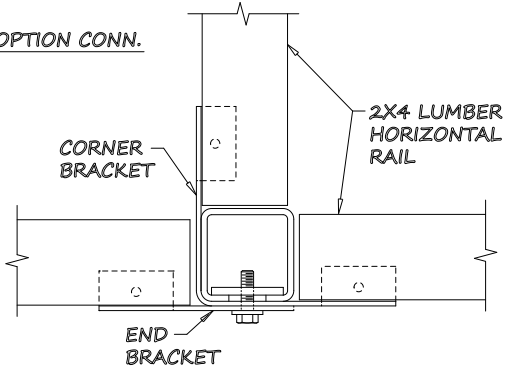
IF POST ARE DRIVEN IN LIEU OF CONCRETE SET, DRIVE 3' MIN. INTO THE GROUND.

POST HEIGHT ABOVE GROUND:

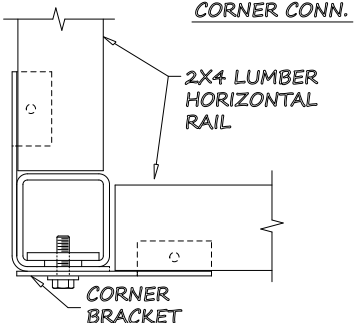
MAX PICKET HEIGHT FOR STANDARD C POST IS 6'-0".



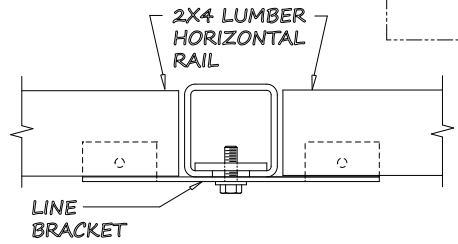
T-OPTION CONN.



CORNER CONN.



LINE POST CONN.



ITEM	QNTY	DESCRIPTION		MATERIAL
		MACHINING TOLERANCES		FABRICATION TOLERANCES
SCALE	NONE	CHK'D BY	DTM	UNDER 18" ± 1/32
DWN BY		DTM01-14-17	APP'D BY	18" AND OVER ± 1/16
		ANGLES		± 0.001
				± 1/48
ALL MACHINED SURFACES 135° BREAK ALL SHARP EDGES				

STANDARD 'C' - VERTICAL PICKETS-WOOD

CAD FILENAME:
FENCE 4-25
LAST PLOT DATE:
09/14/17

GREGORY
FENCE
4100 13th Street SW
Canton, Ohio 44710

REF. No.
DRWG No.
FENCE 4-25