

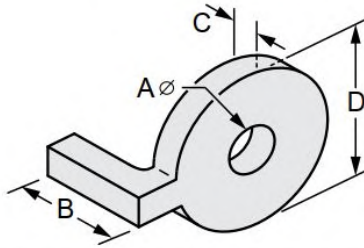


G-STRUT 4100 13th Street SW, Canton OH 44710

Phone: 866.997.8788 – Fax: 330.477.0626

www.gregorystrut.com

UNDERGROUND PIPE CLAMP WASHER – SERIES W503

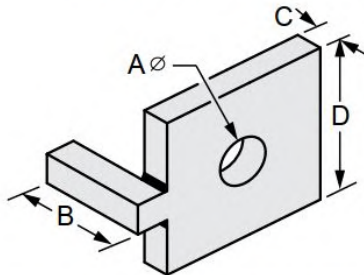


- Size Range:** 3/4" through 1-3/4" tie rod size.
Material: Low Carbon Steel. Cast Iron (3/4" Tie Rod Only)
Finish: Plain.
Ordering: Specify tie rod size; finish and series #.
Function: Designed to secure tie rods when used in conjunction with Series W501 two bolt underground pipe clamp.
Available In: Electro-Galvanized, 304 & 316 Stainless Steel.
Note: Tie rod size 3/4" is made of cast iron material.

PART #	TIE ROD SIZE	FOR PIPE SIZES	Ø SIZE (A)	SIZE (B)	SIZE (C)	SIZE (D)	LBS./ 100pcs
W503106	3/4"	3 - 12	7/8"	1-3/4"	5/8"	2-5/16"	80
W503110	1"	14	1-1/8"	3"	1/2"	3-1/2"	145
W503111	1-1/8"	16	1-1/4"	3"	5/8"	4"	231
W503112	1-1/4"	18	1-3/8"	3"	5/8"	4"	226
W503113	1-3/8"	20	1-1/2"	3"	3/4"	4"	287
W503114	1-1/2"	24	1-5/8"	3"	3/4"	4"	271
W503116	1-3/4"	30 - 36	1-7/8"	3"	1"	4"	417

All clamp washers are plain steel.
 To order other finishes, change the 5th character in the Part # as seen below:
 STAINLESS STEEL (304) = 8
 STAINLESS STEEL (316) = 0
 ELECTRO-GALVANIZED = 2
 Example: **W503, 206** = ELECTRO-GALV
2

UNDERGROUND PIPE CLAMP WASHER – SERIES W504



- Size Range:** 3/4" through 1-3/4" tie rod size.
Material: Low Carbon Steel. Cast Iron (3/4" Tie Rod Only)
Finish: Plain.
Ordering: Specify tie rod size; finish and series #.
Function: Designed to secure tie rods when used in conjunction with Series W501 two bolt underground pipe clamp.
Available In: Electro-Galvanized, 304 & 316 Stainless Steel
Note: Tie rod size 3/4" is made of cast iron material.

PART #	TIE ROD SIZE	FOR PIPE SIZES	Ø SIZE (A)	SIZE (B)	SIZE (C)	SIZE (D)	LBS./ 100pcs
W504106	3/4"	3 - 12	7/8"	1-3/4"	5/8"	2-5/16"	80
W504110	1"	14	1-1/8"	3"	1/2"	3-1/2"	145
W504111	1-1/8"	16	1-1/4"	3"	5/8"	4"	231
W504112	1-1/4"	18	1-3/8"	3"	5/8"	4"	226
W504113	1-3/8"	20	1-1/2"	3"	3/4"	4"	287
W504114	1-1/2"	24	1-5/8"	3"	3/4"	4"	271
W504116	1-3/4"	30 - 36	1-7/8"	3"	1"	4"	417

All clamp washers are plain steel.
 To order other finishes, change the 5th character in the Part # as seen below:
 STAINLESS STEEL (304) = 8
 STAINLESS STEEL (316) = 0
 ELECTRO-GALVANIZED = 2
 Example: **W504, 206** = ELECTRO-GALV
2

PROJECT INFORMATION	APPROVAL STAMP
Project:	Notes:
Address:	
Contractor:	
Engineer:	
Date:	
Approved <input type="checkbox"/> Approved as Noted <input type="checkbox"/> Not Approved <input type="checkbox"/>	