

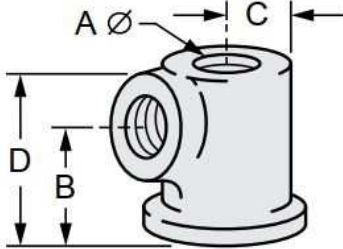


G-STRUT 4100 13th Street SW, Canton OH 44710

Phone: 866.997.8788 – Fax: 330.477.0626

www.gregorystrut.com

ROLLER SOCKET – SERIES W642



- Material:** Cast iron.
Finish: Plain.
Ordering: Specify type #; pipe size; finish and series #.
Function: Designed for use with Series W600.
Available In: Pre-Galvanized.

PART #	TYPE NUMBER	USE WITH PIPE ROLLER SIZE	AXLE SIZE	SIZE (A)	SIZE (B)	SIZE (C)	SIZE (D)	LBS./100pcs
W642110	1	1" to 2"	3/8"	3/8"	5/8"	11/16"	1"	12
W642120	2	2-1/2" to 3-1/2"	1/2"	1/2"	3/4"	11/16"	1-1/4"	27
W642130	3	4"	1/2"	5/8"	7/8"	13/16"	1-1/4"	25
W642140	4	5"	5/8"	5/8"	1"	1"	1-9/16"	53
W642150	5	6"	3/4"	3/4"	1-1/4"	1-1/8"	1-13/16"	92
W642160	6	8" to 10"	7/8"	7/8"	1-1/4"	1-1/8"	2-1/8"	14.4
W642170	7	12"	1"	7/8"	1-3/8"	1-3/8"	2-1/4"	13.4
W642180	8	14"	1-1/8"	1"	1-3/4"	1-3/8"	2-3/8"	20.3
W642190	9	16" to 20"	1-1/4"	1-1/4"	1-13/16"	1-5/8"	3"	25.6
W6421100	10	24"	1-1/2"	1-1/2"	2-3/16"	2-1/16"	3-3/8"	49.6
W6421110	11	30"	1-3/4"	1-1/2"	2-9/16"	2-5/16"	4"	69.4

All above roller sockets are plain steel.
 To order other finishes, change the 5th character in the Part # as seen below:

PRE-GALVANIZED = 4

Example: **W642, 4 10** = PRE-GALV
 4

PROJECT INFORMATION	APPROVAL STAMP
Project:	Notes:
Address:	
Contractor:	
Engineer:	
Date:	
Approved <input type="checkbox"/> Approved as Noted <input type="checkbox"/> Not Approved <input type="checkbox"/>	