

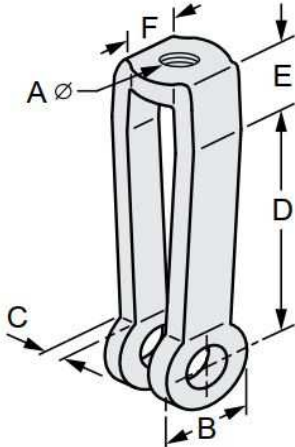


G-STRUT 4100 13th Street SW, Canton OH 44710

Phone: 866.997.8788 – Fax: 330.477.0626

www.gregorystrut.com

FORGED STEEL CLEVIS – SERIES W700



- Size Range:** 3/8" through 2-1/2" pipe size.
- Material:** C - 1035 Forged Steel.
- Finish:** Plain
- Ordering:** Specify rod size; pin size; finish and series #.
- Approvals:** Complies with Manufacturers Standardization Society SP-69 (Type 14).
- Function:** Recommended as an adjustable hanger rod connection for piping and installations.

PART #	TAP SIZE (A)	PIPE SIZE	PIN SIZE	SIZE (B)	SIZE (C)	SIZE (D)	SIZE (E)	SIZE (F)	MAXIMUM RECOMMENDED LOAD(lbs.)	LBS./ 100pcs
W700103	3/8"	2"	1/2"	1-1/2"	5/16"	3-1/2"	5/8"	1"	3500	100
W700104	1/2"	2"	5/8"	1-1/2"	5/16"	3-1/2"	5/8"	1"	3500	100
W700105	5/8"	2"	3/4"	1-1/2"	5/16"	3-1/2"	5/8"	1"	3500	100
W700106	3/4"	2-1/2"	7/8"	2-1/2"	5/16"	4"	1-1/8"	1-1/4"	7500	250
W700107	7/8"	2-1/2"	1"	2-1/2"	5/16"	4"	1-1/8"	1-1/4"	7500	250
W700110	1"	3"	1-1/8"	3"	1/2"	5"	1-1/4"	1-1/2"	15000	400
W700112	1-1/4"	3"	1-3/8"	3"	1/2"	5"	1-1/4"	1-1/2"	15000	400
W700114	1-1/2"	3-1/2"	1-5/8"	3-1/2"	1/2"	6"	1-1/2"	1-3/4"	18000	600
W700116	1-3/4"	4"	1-7/8"	4"	1/2"	6"	1-3/4"	2"	21000	800
W700120	2"	5"	2-1/4"	5"	5/8"	7"	2-1/4"	2-1/2"	37500	1600
W700122	2-1/4"	6"	2-1/2"	6"	3/4"	8"	2-3/4"	3"	54000	2600
W700124	2-1/2"	6"	2-3/4"	6"	3/4"	8"	2-3/4"	3"	54000	2600

PROJECT INFORMATION	APPROVAL STAMP
Project:	Notes:
Address:	
Contractor:	
Engineer:	
Date:	
Approved <input type="checkbox"/> Approved as Noted <input type="checkbox"/> Not Approved <input type="checkbox"/>	