

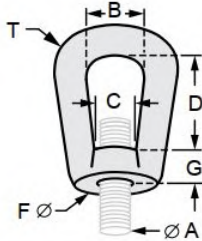


G-STRUT 4100 13th Street SW, Canton OH 44710

Phone: 866.997.8788 – Fax: 330.477.0626

www.gregorystrut.com

FORGED STEEL WELDLESS EYE NUT – SERIES W715

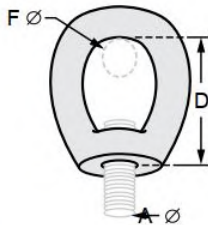


- Size Range:** 3/8" through 2-1/2" rod size.
Material: ASII C-1030 Fine Grain Steel.
Finish: Plain
Ordering: Specify rod size; finish and series #.
Function: Designed for use on high temperature pipe runs allowing for vertical adjustment.
Available In: 304 and 316 Stainless Steel.

PART #	ROD SIZE (A)	SIZE (B)	SIZE (C)	SIZE (D)	THICKNESS (T)	Ø SIZE (F)	SIZE (G)	MAXIMUM RECOMMENDED LOAD(lbs.)	LBS./100pcs
W715103	3/8"	1-1/2"	1-1/8"	2"	1/2"	1-3/8"	5/8"	1200	56
W715104	1/2"	1-1/2"	1-1/8"	2"	1/2"	1-3/8"	5/8"	2200	59
W715105	5/8"	1-1/2"	1-1/8"	2"	1/2"	1-3/8"	5/8"	3700	61
W715106	3/4"	1-1/2"	1-1/8"	2"	1/2"	1-3/8"	5/8"	5500	63
W715107	7/8"	2"	1-5/8"	2-5/8"	3/4"	2"	1"	5700	167
W715110	1"	2"	1-5/8"	2-5/8"	3/4"	2"	1"	10000	172
W715111	1-1/8"	2-1/2"	1-3/4"	3-3/8"	1"	2-3/8"	1-1/4"	12000	345
W715112	1-1/4"	2-1/2"	1-3/4"	3-3/8"	1"	2-3/8"	1-1/4"	30000	364
W715114	1-1/2"	2-1/2"	1-3/4"	3-3/8"	1"	2-3/8"	1-1/4"	22000	373
W715116	1-3/4"	4"	4"	6-1/4"	1-1/2"	4"	2-1/4"	30000	1480
W715120	2"	4"	4"	6-1/4"	1-1/2"	4"	2-1/4"	40000	1550
W715122	2-1/4"	4"	4"	6-1/4"	1-1/2"	4"	2-1/4"	45000	1614
W715124	2-1/2"	4"	4"	6-1/4"	1-1/2"	4"	2-1/4"	50000	1657

All Eye Nuts are plain steel. To order other finishes, change the 5th character in the Part # as seen below:
 STAINLESS STEEL (304) = 8
 STAINLESS STEEL (316) = 0
 Example: **W715,803** = STAINLESS STEEL (304)

MALLEABLE EYE SOCKET – SERIES W720



- Size Range:** 3/8" through 7/8" pipe size.
Material: Malleable Iron.
Finish: Plain
Ordering: Specify rod size; finish and series #.
Function: A non-adjustable threaded rod attachment often used with the split ring hanger and beam clamps.
Available In: Copper Finish (sizes 1/4" & 1/2" only).

PART #	ROD SIZE (A)	PIPE SIZE	SIZE (D)	MAX. BOLT Ø (F)	MAXIMUM RECOMMENDED LOAD(lbs.)	LBS./100pcs
W720103	3/8"	1/2"	1-3/8"	1-1/8"	610	20
W720104	1/2"	1/2"	1-1/2"	1-1/8"	1130	40
W720105	5/8"	5/8"	1-3/4"	1-1/8"	1810	44
W720106	3/4"	7/8"	2-1/8"	1-1/8"	2710	65
W720107	7/8"	7/8"	2-3/8"	1-5/8"	2950	78

All above roller support are plain steel. To order other finishes, change the 5th character in the Part # as seen below:
 COPPER FINISH = 3
 Example: **W720,303** = COPPER

PROJECT INFORMATION	APPROVAL STAMP
Project:	Notes:
Address:	
Contractor:	
Engineer:	
Date:	
Approved <input type="checkbox"/> Approved as Noted <input type="checkbox"/> Not Approved <input type="checkbox"/>	