

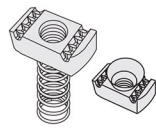


G-STRUT® WIZARD Accessories

10 QUESTIONS TO ASK —

WHEN SELECTING THE RIGHT G-STRUT® ACCESSORIES

1 BASIC FASTENING HARDWARE



Channel nuts

- Spring nut or top spring
- No spring
- EZ (conical shaped)
- Thread size/standard or metric

Finish (EG, HDG, SS)

2 TYPICAL HARDWARE AND ROD

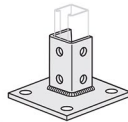


Other threaded fasteners

- Bolt, screw, nut, washer
- Rod couplers, swivels
- Threaded rod (EG, SS, HDG, PL)
- Sizes (1/4" thru 2-1/2")

Finish (EG, HDG, SS, Plain)

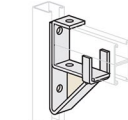
3 FITTINGS AND ACCESSORIES



- Flat plate
- Angle
- Wing
- "Z" fitting
- Splice
- "U" fitting
- Clevis
- Roller & trolley
- Post bases
- Custom

Finish (EG, HDG, SS, Painted, Plain, YZ, PVC)

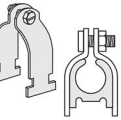
5 BRACKET FITTINGS



- Stair, ladder, wall
- Clevis type
- Shelf brackets
- Knee and tube brace

Finish (EG, HDG, SS, Painted)

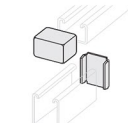
6 CONDUIT CLAMPS



- EMT
- Rigid
- Universal
- O.D. tubing
- Angle, riser, "U"
- Copper
- Stainless
- Cushion

Finish (EG, HDG, SS, Painted, YZ, PVC, AL)

7 ENDCAPS AND CLOSURES



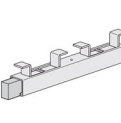
Steel or PVC end caps

- Type A or B
- Finish/color

Steel or plastic closure strip

- Pre-galv.
- Color

8 CONTINUOUS CONCRETE INSERTS



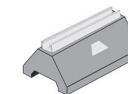
Channel size

- 1-3/8"
- 1-5/8"
- 13/16"

Accessories

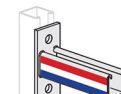
Finish (EG, HDG, SS)

9 ROOF BLOCK SUPPORTS



- Standard closed cell poly foam
- Metal insert cap
- HDPE (polyethylene) channel

10 SPECIALS/CUSTOM ORDERS



- Custom cuts, CTL
- Special packaging/bundling
- Atypical finishes
- Custom colors
- Does job require domestic origin?



G-STRUT® Metal Framing Channel & Fittings

5 QUESTIONS TO ASK —

WHEN SELECTING THE RIGHT G-STRUT® CHANNEL

1 GAUGE AND DEPTH



What minimum gauge (material thickness) and depth (profile size) are required for the job?

12 Gauge (.097)

- 1-5/8" x 13/16" D
- 1-5/8" x 7/8" D
- 1-5/8" x 1" D
- 1-5/8" x 1-3/8" D
- 1-5/8" x 1-5/8" D
- 1-5/8" x 2-7/16" D
- 1-5/8" x 3 1/4" D

14 Gauge (.071)

- 1-5/8" x 13/16" D
- 1-5/8" x 1-5/8" D

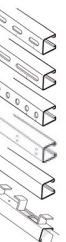
2 LENGTH



What channel length will best serve our end use?

- **Standard 10'**
(Shorter runs for easy handling)
- **Standard 20'**
(Typical for longer runs)
- **6'8"** (Typical for commercial joists distance)
- **Custom manufactured-to-length**
any size 4" to 24'

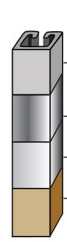
3 PERFORATION



What "hole pattern" (if any) will best serve the job function?

- **Oval slot** (Half slot) [9/16" x 1 1/8" x 2" on ctr.]
- **Long slot** (Elongated slot) [13/32" x 3" x 4" on ctr.]
- **Round hole** [9/16" Diam x 1-7/8" on ctr.]
- **Knock out** [7/8" Diam x 6" on ctr.]
- **Solid** (No perforation)
- **Continuous concrete insert**

4 MATERIAL



What "substrate" will best serve the job function?

- **Steel**
(Carbon steel, structural grade, 33,000 min yield)
- **Stainless steel** [Grade 304 or 316]
- **Aluminum**
- **Fiberglass**

5 FINISH



What type of finish or coating will best serve the construction?

Pre-galvanized (Continuous galvanized)

- G90 zinc coating weight for cost-effective long-term galvanic and barrier corrosion protection

Hot dipped Galvanized

- (HDG - after fabrication, batch dip) where aqueous or exterior applications require greater corrosion protection

Green

- Powder coated, heat cured, topical coating (custom colors also available)

PVC coat (May PVC coat over plain or galvanized)

- Heavy PVC coat for extended barrier protection or cosmetic effects



WIZCoat™ galvanneal

- Paintable pregalvanized material requires no pre-treatment. Easily spray or dry fall painted post-installation

Plain

- Untreated, "plain" steel with no topical/barrier coating

Gold

- Yellow zinc electro galv.

PVC coat (May PVC coat over plain or galvanized)

- Heavy PVC coat for extended barrier protection or cosmetic effects



G-FORCE® Pipe Hangers & Supports

10 QUESTIONS TO ASK —

WHEN SELECTING THE RIGHT G-FORCE® HANGERS

1 BEAM CLAMPS



Malleables

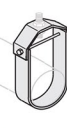
- Universal ("Junior")
- Wide Throat
- Purlin
- Rod Insulator
- C-Clamp and Iron Jaw

Finish (Plain, Galv., HDG, SS)

Steel clamps

- C-Clamp and C-Type
- Window
- Adjustable rod
- Adjustable flange
- Center load

2 CLEVIS HANGERS



Clevis types

- Standard
- w/Insulation shield
- Extended bottom
- Light duty
- "V" bottom

Finish (Plain, Galv., CU, HDG, SS, EPOX)

3 RISER CLAMPS



Standard duty

- Iron pipe riser
- Single bolt

Underground

- Pipe clamp washer
- 2-bolt and 4-bolt heavy duty

Finish (Plain, Galv., CU, HDG, SS, EPOX)

Heavy duty

- Riser pipe clamp
- Double bolt
- Offset
- Extended

4 SWIVEL RINGS



Swivel types (NFPA)

- Iron pipe swivel
- Iron pipe swivel with shield
- Conduit J-type

Finish (Plain, Galv., CU, HDG, SS, EPOX)

5 SPLIT RING HANGERS



Split ring types

- Hinged
- Extension
- 2-screw
- Van

Finish (Plain, Galv., CU, HDG, SS, EPOX)

6 SHIELDS AND SADDLES



Shields

- Insulation protection
- Self-centering/ribbed
- Plastic pipe trough

Saddles

- Pipe covering protection
- Isolators
- Surge ring

Saddle supports

- Adjustable
- Heavy duty

7 ROLLER SUPPORTS AND STRAPS



Pipe rollers

- Clevis roller
- Chair type
- Pipe roller stand
- Two rod type/double yoked
- Adjustable roller

Finish (Plain, Galv., CU, HDG, SS, EPOX)

Straps

- Standard 1 and 2 hole
- CPVC
- J hook
- Short pipe

8 SEISMIC



- Studded channel nuts
- Rod stiffener
- Conveyor nuts
- No-turn washers
- Adjustable hinges
- Sway braces

9 U-BOLTS AND ALL-THREAD ROD



Carbon steel u-bolts

Finish (Plain, Galv., CU, HDG, SS, EPOX)

All-thread

- 6', 10', 12'
- 1/4" through 1-1/4"

10 HARDWARE, CONNECTORS AND MISC



- Ceiling flange
- Eye nuts and sockets
- Beam connectors
- Brackets
- Square plate washers
- Eye rods
- Concrete inserts

gregorystrut.com

gregorystrut.com

BEAM CLAMPS W100 Series W110 Series W130 Series W140 Series W200 and W201 Series W210 and W211 Series W215-W217 Series W220 Series W225 Series W226 Series W227 Series W230 Series	RETAINING STRAPS AND GUIDES W115 Series W116 Series W117 Series W118 Series W120 Series W121-W127 Series SADDLE SUPPORTS W240 Series W245 Series W250 Series W255 Series W260 Series W261 Series W265 Series	STANDS, WALL BRACKETS AND SUPPORTS W275 Series W276 Series W280 Series W281 Series W290 Series W291 Series SWIVEL RING AND BAND HANGERS W300 and W302 Series W303 Series W305-W307 Series W310 Series W320 Series W325 Series W330 Series W340 Series	CLEVIS HANGERS W400 Series W405 Series W410 Series W411 Series W412 Series W413 Series W415 Series W420 Series W430 Series RISER CLAMPS AND ACCESSORIES W500 Series W501 Series W502 Series W503 Series W504 Series W505 Series	PIPE STRAPS, HOOKS AND TURNBUCKLES W510 Series W511 Series W520 Series W521 Series W530 Series W540 Series W550 Series SHIELDS AND ISOLATORS W560 Series W561 Series W562 Series W570 Series W580 Series W581 Series W585 Series W586 Series PIPE ROLLERS W600 Series W601 Series W610 Series W620 Series W621 Series W622 Series W623 Series W630 Series W640 Series W641 Series W642 Series W650 Series W651 Series W652 Series W655 Series W660 Series	WELDING ATTACHMENTS AND CONCRETE PLATES W738 Series W739 Series W740 Series W741 Series W745 Series W746 Series SPECIAL FLANGES AND SPLIT RINGS W750 Series W751 Series W752 Series W755 Series W760 Series W761 Series W765 Series W770 Series W780 Series	MISCELLANEOUS ACCESSORIES AND FASTENERS W785 Series W790 Series W791 Series W800 Series W805 and W806 Series W810 and W811 Series W815 Series W816 Series W817 Series W818 Series W820 Series W821 Series W825 Series W830 Series W835 Series W836 Series W840 Series	ROOF BLOCKS GRB100 Series GRB101 Series GRB102 Series GRB103 Series GRB104 Series GRB200 Series GRB300 Series SEISMIC BRACING GSTN Series GRS375062 Series GDCN031 Series G316 and G3300 Series	MISCELLANEOUS AND SPECIAL FITTINGS G336 Series G337 Series G338 Series G339 Series G340 Series G341 Series G3410 Series G3421, G3422 Series G3431, G3432 Series G344 Series G346 Series G347 Series G348 Series G349 Series G350 Series G351 Series G352 Series G619 Series	G607 Series G608 Series GTB608 Series G609 Series G610 Series G611 Series G6111 Series G613 Series CLEVIS FITTINGS G622 Series G623 Series G624 Series G625 Series HARDWARE No Spring Series Short Spring Series Regular Spring Series Long Spring Series GTSN Series	GT623 Series GT625 Series FLAT PLATE FITTINGS G201 Series G202 Series G203 Series G205 Series G2051 Series G206 Series G207 Series G2071 Series G208 Series G210 Series G211 Series G212 Series G213 Series G214 Series G216 Series	G217 Series G218 Series G219 Series G2191 Series G220 Series G221 Series G222 Series WING FITTINGS G321L, R Series G32112L, R Series G326 Series G3261 Series G327 Series G3271 Series G3281 Series G329 Series G329L, R Series G330L, R Series G331 Series G332 Series	SUPPORT SYSTEMS G154 Series GTR Series G904 Series ANGLE FITTINGS G301 Series G302 Series G303 Series G304 Series G3051 Series G306 Series G3071 Series G308 Series G309 Series G310 Series	GM611 Series GT613 Series GT614 Series GT615 Series GT616 Series GT617 Series GT618 Series BEAM CLAMPS G401 Series G402 Series G4021 Series G403 Series G406 Series G407 Series G4071 Series	CLAMPS EMT GC110 Series 1/2"-2" Rigid GC112 Series 1/2"-10" Universal GC114 Series 1/2"-2" O.D. Tubing GC111 Series 1/2"-8" Cushion-Tube GC1 Series 1/4"-4 1/8" Cushion-Pipe GC2 Series 1/4"-6" O.D. Tube GC111 Copper Series 1/4"-8" Pipe Strap G1108 Series 1/2"-8", 2-hole Tubing Clamp G1109 Series 1/4"-1", 1-hole
---	--	--	---	---	---	---	---	--	---	---	---	---	---	---

METAL CHANNEL G812 1 1/4" G712 1 1/8" G582 1 5/8" G382 1 3/8" G102 1" G132 1 3/16" G782 7/8" G584 1 5/8" G134 1 3/16"	PERFORATION DIMENSIONS Oval Slot 9/16"x1 1/8", 2" on Center Long Slot 1 1/2"x2 1/2", 2" on Center Hole 7/16" dia., 1 7/8" on Center Knock Out 7/16" dia., 2" on Center	MATERIAL Steel Stainless Steel Aluminum Fiberglass	FINISH Pre-Galvanized Hot Dipped Green PVC Coat WUZCoat® Galvanneal Plain Gold Custom Colors
---	---	---	---