



Environmentally friendly blocks. Made from 100% recycled tires.



ROOFTOP

▸ SUPPORT BLOCKS



Why G-STRUT Roof Blocks?

- 100% recycled rubber block
- UV resistant materials
- Green reflector for high visibility and safety
- Innovative design inhibits floating and shifting
- Freeze and thaw resistant
- LEED certifiable product
- Vibration dampening
- Compatible with most rooftop materials



Strut channels are available in multiple finishes and substrates, including:

- Pre-galvanized steel, G-90 (ASTM A-653)
- Hot-dipped galvanized (ASTM A-123)
- Stainless steel, grades 304 and 316 (ASTM A-240)
- Aluminum (ASTM B-221)
- Powder coated green (ASTM D-523-85, D-33693-74, D-2794-84, D-3359-83, D-522-93a)
- PVC coated black



Versatile applications:

- Gas pipes
- Solar
- Electrical conduit
- Cable tray systems
- HVAC/refrigeration
- Pipe form systems
- Roof walkways and platform systems



Standard channel size:

- G134 (13/16" x 1 5/8", 14 gauge)

Available in other channels and configurations:

- G132 (13/16" x 1 5/8", 12 gauge)
- G582 (1 5/8" x 1 5/8", 12 gauge)
- G712 (2 7/16" x 1 5/8", 12 gauge)
- G812 (3 1/4" x 1 5/8", 12 gauge)
- G582A (3 1/4" x 1 5/8", 12 gauge, back-to-back welded 1 5/8" channels)

100 SERIES

STANDARD ROOF BLOCK AND CHANNEL

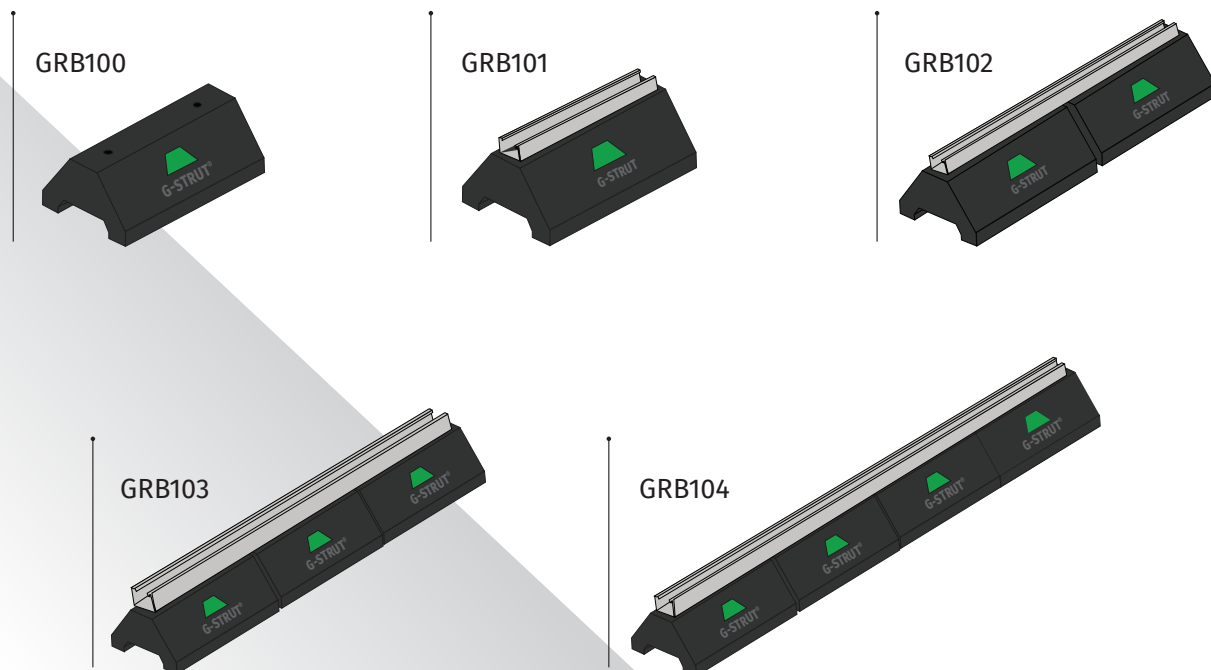
With 13/16" x 15/8", 14 gauge (G134), pre-galvanized steel strut channel*

*(GRB100 is base only, no channel)

- Comes pre-assembled at factory
- 14 gauge, 13/16" pre-galvanized steel channel
- Uses standard strut fittings and clamps
- 100% recycled rubber block
- UV resistant materials
- Green reflector for high visibility and safety
- Innovative design inhibits floating and shifting
- Freeze and thaw resistant
- LEED certifiable product
- Vibration dampening
- Compatible with most rooftop materials

PART # DESCRIPTION

| | | |
|--------|------|---------------------------|
| GRB100 | 9.8" | single base, no channel |
| GRB101 | 9.8" | single base, with channel |
| GRB102 | 20" | system with 2 bases |
| GRB103 | 30" | system with 3 bases |
| GRB104 | 40" | system with 4 bases |



200 SERIES

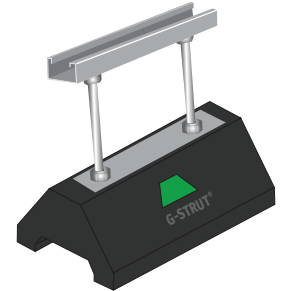
RISER ROD PLATFORM WITH STRUT AND LDP*

*Load distribution plate

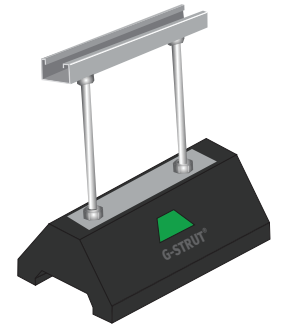
- Comes pre-assembled at factory
- 14 gauge, 13/16" pre-galvanized steel channel
- Uses standard strut fittings and clamps
- 100% recycled rubber block
- UV resistant materials
- Green reflector for high visibility and safety
- Innovative design inhibits floating and shifting
- Freeze and thaw resistant
- LEED certifiable product
- Vibration dampening
- Compatible with most rooftop materials
(consult with roofing manufacturing or contractor)

| PART # | DESCRIPTION |
|--------|---|
| GRB208 | 9.8" channel with 8" riser rod and LDP |
| GRB212 | 9.8" channel with 12" riser rod and LDP |
| GRB216 | 9.8" channel with 16" riser rod and LDP |

GRB208



GRB212



GRB216



300 SERIES

ROLLER STAND BLOCK

- Comes pre-assembled at factory
- 14 gauge, 13/16" pre-galvanized steel channel
- Uses standard strut fittings and clamps
- 100% recycled rubber block
- UV resistant materials
- Green reflector for high visibility and safety
- Innovative design inhibits floating and shifting
- Freeze and thaw resistant
- LEED certifiable product
- Vibration dampening
- Compatible with most rooftop materials
- Available in sizes 1" - 6"

| PART # | DESCRIPTION |
|---------|-----------------------------------|
| GRB3100 | 1" roller stand on roof block |
| GRB3125 | 1 1/4" roller stand on roof block |
| GRB3150 | 1 1/2" roller stand on roof block |
| GRB3200 | 2" roller stand on roof block |
| GRB3250 | 2 1/2" roller stand on roof block |
| GRB3300 | 3" roller stand on roof block |
| GRB3350 | 3 1/2" roller stand on roof block |
| GRB3400 | 4" roller stand on roof block |
| GRB3500 | 5" roller stand on roof block |
| GRB3600 | 6" roller stand on roof block |

GRB300 SERIES

