



Environmentally friendly blocks. Made from 100% recycled tires.



ROOFTOP

▸ SUPPORT BLOCKS



Why G-STRUT Roof Blocks?

- 100% recycled rubber block
- UV resistant materials
- Green reflector for high visibility and safety
- Innovative design inhibits floating and shifting
- Freeze and thaw resistant
- LEED certifiable product
- Vibration dampening
- Compatible with most rooftop materials



Strut channels are available in multiple finishes and substrates, including:

- Pre-galvanized steel, G-90 (ASTM A-653)
- Hot-dipped galvanized (ASTM A-123)
- Stainless steel, grades 304 and 316 (ASTM A-240)
- Aluminum (ASTM B-221)
- Powder coated green (ASTM D-523-85, D-33693-74, D-2794-84, D-3359-83, D-522-93a)
- PVC coated black



Versatile applications:

- Gas pipes
- Solar
- Electrical conduit
- Cable tray systems
- HVAC/refrigeration
- Pipe form systems
- Roof walkways and platform systems



Standard channel size:

- G134 (13/16" x 1 5/8", 14 gauge)

Available in other channels and configurations:

- G132 (13/16" x 1 5/8", 12 gauge)
- G582 (1 5/8" x 1 5/8", 12 gauge)
- G712 (2 7/16" x 1 5/8", 12 gauge)
- G812 (3 1/4" x 1 5/8", 12 gauge)
- G582A (3 1/4" x 1 5/8", 12 gauge, back-to-back welded 1 5/8" channels)

100 SERIES

STANDARD ROOF BLOCK AND CHANNEL

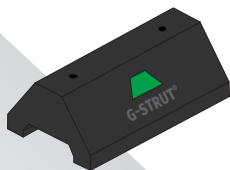
With 13/16" x 15/8", 14 gauge (G134), pre-galvanized steel strut channel*

*(GRB100 is base only, no channel)

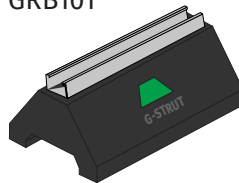
- Comes pre-assembled at factory
- 14 gauge, 13/16" pre-galvanized steel channel
- Uses standard strut fittings and clamps
- 100% recycled rubber block
- UV resistant materials
- Green reflector for high visibility and safety
- Innovative design inhibits floating and shifting
- Freeze and thaw resistant
- LEED certifiable product
- Vibration dampening
- Compatible with most rooftop materials

PART #	DESCRIPTION
GRB100	9.8" single base, no channel
GRB101	9.8" single base, with channel
GRB102	20" system with 2 bases
GRB103	30" system with 3 bases
GRB104	40" system with 4 bases

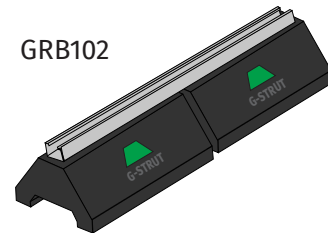
GRB100



GRB101



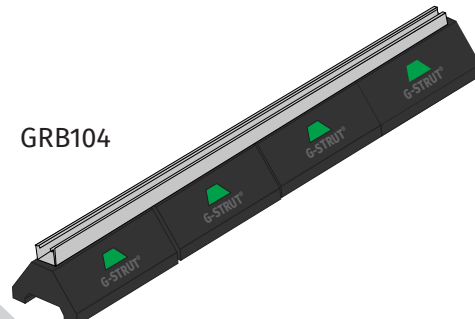
GRB102



GRB103



GRB104



200 SERIES

RISER ROD PLATFORM WITH STRUT AND LDP*

*Load distribution plate

- Comes pre-assembled at factory
- 14 gauge, 13/16" pre-galvanized steel channel
- Uses standard strut fittings and clamps
- 100% recycled rubber block
- UV resistant materials
- Green reflector for high visibility and safety
- Innovative design inhibits floating and shifting
- Freeze and thaw resistant
- LEED certifiable product
- Vibration dampening
- Compatible with most rooftop materials
(consult with roofing manufacturing or contractor)

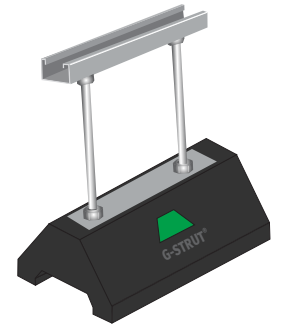
PART #	DESCRIPTION
--------	-------------

GRB208	9.8" channel with 8" riser rod and LDP
GRB212	9.8" channel with 12" riser rod and LDP
GRB216	9.8" channel with 16" riser rod and LDP

GRB208

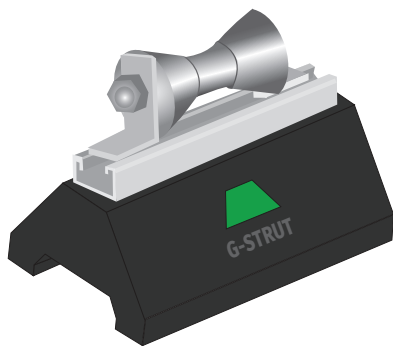


GRB212



GRB216



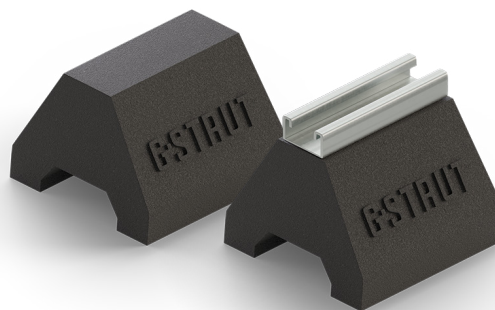


300 SERIES

ROLLER STAND BLOCK

- Comes pre-assembled at factory
- 14 gauge, 13/16" pre-galvanized steel channel
- Uses standard strut fittings and clamps
- 100% recycled rubber block
- UV resistant materials
- Green reflector for high visibility and safety
- Innovative design inhibits floating and shifting
- Freeze and thaw resistant
- LEED certifiable product
- Vibration dampening
- Compatible with most rooftop materials
- Available in sizes 1" - 6"

PART #	DESCRIPTION
GRB3100	1" roller stand on roof block
GRB3125	1 1/4" roller stand on roof block
GRB3150	1 1/2" roller stand on roof block
GRB3200	2" roller stand on roof block
GRB3250	2 1/2" roller stand on roof block
GRB3300	3" roller stand on roof block
GRB3350	3 1/2" roller stand on roof block
GRB3400	4" roller stand on roof block
GRB3500	5" roller stand on roof block
GRB3600	6" roller stand on roof block



400 SERIES

HALF ROOF BLOCK

- Comes pre-assembled at factory
- 14 gauge, 13/16" pre-galvanized steel channel
- Uses standard strut fittings and clamps
- 100% recycled rubber block
- UV resistant materials
- Innovative design inhibits floating and shifting
- Freeze and thaw resistant
- LEED certifiable product
- Vibration dampening
- Compatible with most rooftop materials (consult with roofing manufacturer or contractor)
- Shorter base typically used for smaller jobs

PART #	DESCRIPTION
GRB400	5 3/16" single base, no channel
GRB401	5 3/16" single base, with channel

