



# GUARDIAN 5 (G5)

## MASH TL-5 LONGITUDINAL BARRIER

Guardian 5 (G5) is a strong median and longitudinal barrier designed to safely capture and redirect a fully loaded 80,000-lb. vehicle. It is intended for use on roadways with high truck traffic, where drainage is a concern and for bridge pier protection. G5 is a more cost-effective alternative to concrete barriers and meets all MASH TL-5 standards.



**GREGORY**  
HIGHWAY

[gregoryhighway.com](http://gregoryhighway.com)



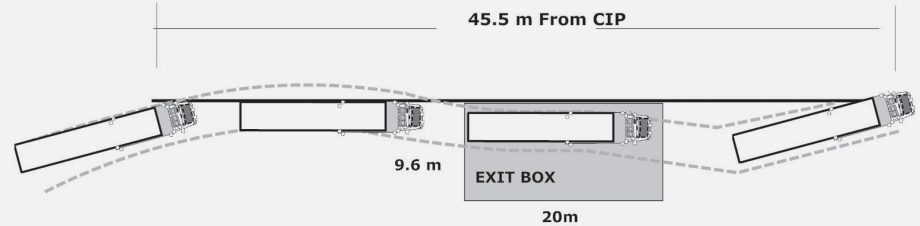
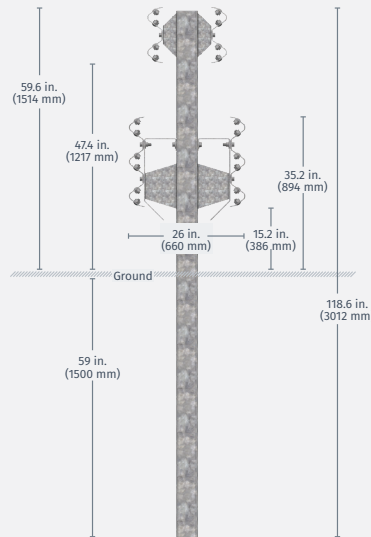
# A softer, safer alternative to concrete

## G5 FEATURES

- ▶ Meets MASH TL-5 standards
- ▶ Used for roadside or median applications
- ▶ Bi-directional median or longitudinal barrier
- ▶ Galvanized, high strength steel construction
- ▶ Direct driven in standard AASHTO strong soils
- ▶ Maximum dynamic deflection of 4'4"
- ▶ Working width of 5'5"
- ▶ Easy to install with standard equipment
- ▶ Integrated anchorage system within the length of barrier
- ▶ Open-bottom design allows for drainage and easy snow removal
- ▶ Common rail profiles are quickly replaceable after impact
- ▶ Transitions to standard AASHTO W-Beam or Thrie-Beam

## SPECIFIC ROADWAY APPLICATION SIMULATIONS

- ▶ Reduced post spacing
- ▶ Higher impact speeds
- ▶ Use with curbing
- ▶ Use with glare screening
- ▶ Direct transition to Ontario shape concrete median barrier
- ▶ Analysis of impact envelope; tractor vs. trailer



Test Level	Vehicle Type	Mass		Speed		Angle	Impact Energy	
		Kg	Lb	Km/h	MPH		kJ	Kip-ft
<b>Test 5-12</b>	<b>Tractor Truck</b>	36,000	79,400	80	50	15°	595	~440
<b>Test 5-11</b>	<b>Pickup Truck</b>	2,270	5,000	100	62	25°	156	~116
<b>Test 5-10</b>	<b>Small Car</b>	1,100	2,425	100	62	25°	75	~56

