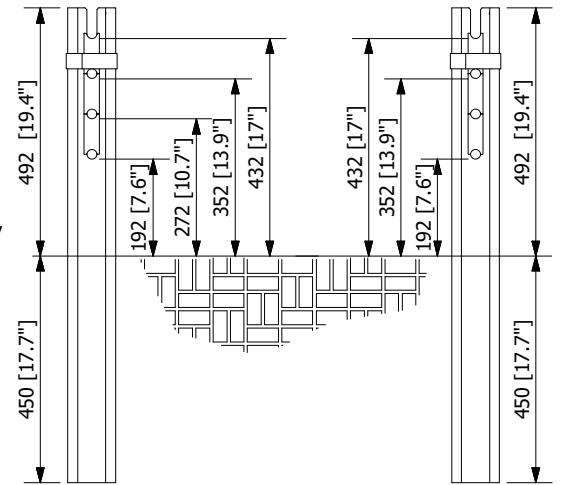


4 wire system assembly

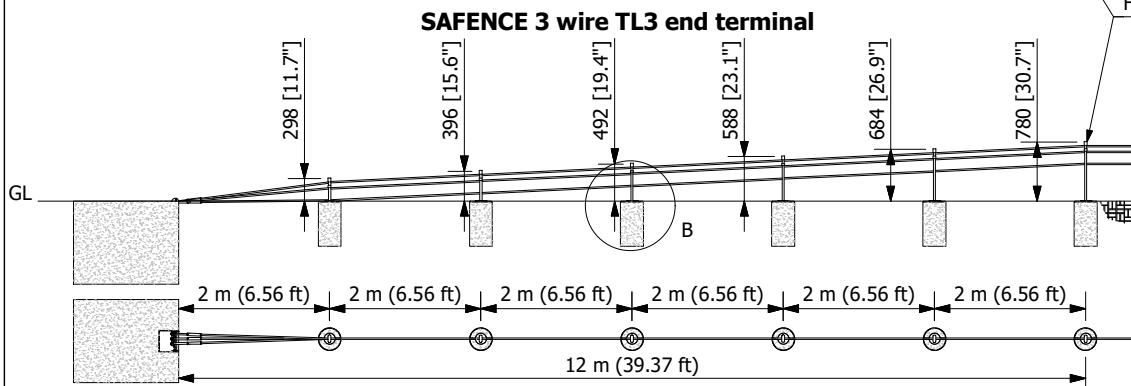
- I-Cap (D-3003A)
- C-Cap (D-3010A)
- I-Stiffening frame (D-3004A)
- C-Stiffening frame (D-3011A)
- C- & I-Plastic spreader 4 wires (D-3020A)
- Steel rope (x4)
- I-Post (D-3001A)
- C-Post (D-3008A)
- I-Ground cover (D-3002A)
- C-Ground cover (D-3009A)

4 wire system (A)

3 wire system (B)



Post shortening illustration of view A and view B respectively.



3 wire system assembly

- I-Cap (D-3003A)
- C-Cap (D-3010A)
- I-Stiffening frame (D-3004A)
- C-Stiffening frame (D-3011A)
- C- & I-Plastic spreader 4 wires (D-3020A)
- Steel rope (x3)
- I-Post (D-3001A)
- C-Post (D-3008A)
- I-Ground cover (D-3002A)
- C-Ground cover (D-3009A)

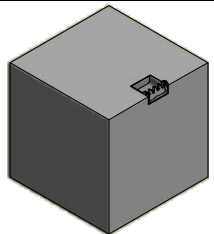
Optional steel spreader (D-3022A)

As a very strongly recommended option, plastic spreaders of both first and last post of the SAFENCE 350 TL3 end terminal could be replaced by a steel spreader to withstand heavy forces from cables changing direction towards the end anchor as well as the full height barrier.

SAFENCE 350 TL3 end terminal construction drawing partially depicts assembly instructions of either SAFENCE C-Post or SAFENCE I-Post. Nevertheless SAFENCE post profiles C & I are fully equivalent in terms of assembly method and working features, differing only in profile dependent installation components.

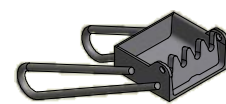
SAFENCE concrete footing, steel sleeve, bridge plate as well as driven post are all equivalent in function.

Concrete anchor (D-3017)



- Posts are to be shortened to specified length.
- The wire rope safety fence is to follow the contours and line of the road without any visible horizontal or vertical deviations.
- End anchors can either be cast on site or prefabricated.
- Anchors are to be aligned with wire rope safety fence.
- Embedded wire fitting are to be placed at ground level, be placed horizontally at the side of the road and follow the slope of the road longitudinally.
- Backfilling around end anchors are to be done with gravel, which is vibrated.
- Anchors are to be well covered.

Anchor embed wire fitting (D-3018A)

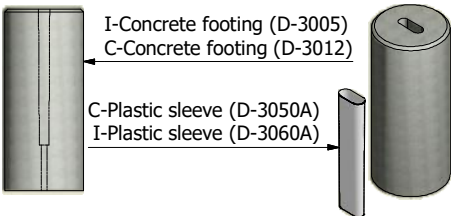


Check rope and Safety shackle (D-3028A)

Wire fitting (D-3023A)



Concrete footing



Size of concrete footing depends on ground condition.

Cast on site footings might imply a need of C-Plastic sleeve (D-3050A).

Drawn RF	Date 2018-09-20	Acceptance standard NCHRP 350	Units mm [inch]	Sheet size A4
BLUE SYSTEMS		Name SAFENCE 350 TL3 end terminal		
Fiskebäcks Hamn 16 S-426 58 Västra Frölunda Sweden		Tel: +46 31-29 72 16 Fax: +46 31-29 30 65 E-mail: info@bluesystems.se		Drawing no. SRB-3102
This drawing is the property of BLUE SYSTEMS AB. The content must not be copied or made available to any third party without our written permission.				Rev