

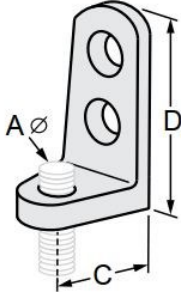


G-STRUT 4100 13th Street SW, Canton OH 44710

Phone: 866.997.8788 – Fax: 330.477.0626

www.gregorystrut.com

SIDE BEAM CONNECTOR – SERIES W725

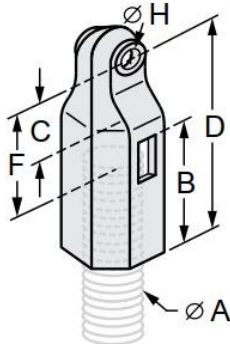


- Size Range:** 3/8" through 1/2" all thread rod.
Material: Malleable Iron.
Finish: Plain.
Ordering: Specify rod size; finish and series #.
Function: Recommended for mounting to side of a wood beam with W825 Series wood drive screws.
Available In: Electro-Galvanized & Copper.

PART #	SIZE (A)	SIZE (C)	SIZE (D)	MAXIMUM RECOMMENDED LOAD(lbs.)	LBS./100pcs	CARTON QTY.
W725103	3/8"	9/16"	2-3/8"	250	13	100
W725104	1/2"	3/4"	2-3/4"	480	25	100

Beam connectors are plain steel. To order other finishes, change the 5th character in the Part # as seen below:
 ELECTRO-GALVANIZED = 2
 COPPER FINISH = 3
 Example: W725, **x**03 = ELECTRO-GALV
 2

EXTENSION PIECE – SERIES W730



- Size Range:** 3/8" through 7/8" rod size.
Material: Malleable Iron.
Finish: Plain.
Ordering: Specify rod size; finish and series #.
Function: Designed for attaching a hanger rod to various building attachments.
Available In: Electro-Galvanized.

PART #	ROD SIZE (A)	PIPE SIZE	SIZE (B)	SIZE (C)	SIZE (D)	SIZE (E)	SIZE (F)	SIZE (G)	MAXIMUM RECOMMENDED LOAD(lbs.)	LBS./100pcs
W730103	3/8"	3/4" to 2"	1-1/4"	1/2"	2"	1/2"	1-1/4"	1/2"	610	20
W730104	1/2"	2-1/2" to 3-1/2"	1-3/8"	5/8"	2-1/4"	1/2"	1-3/8"	5/8"	1130	40
W730105	5/8"	4" to 5"	1-1/2"	3/4"	2-1/2"	1/2"	1-1/2"	5/8"	1910	44
W730106	3/4"	6"	1-3/4"	7/8"	2-7/8"	1/2"	1-5/8"	5/8"	2710	65
W730107	7/8"	8" - 12"	1-7/8"	7/8"	3"	9/16"	1-3/4"	3/4"	2950	78

All above extension pieces are plain steel. To order other finishes, change the 5th character in the Part # as seen below:
 ELECTRO-GALVANIZED = 2
 Example: W730, **x**03 = ELECTRO-GALV
 2

PROJECT INFORMATION	APPROVAL STAMP
Project:	Notes:
Address:	
Contractor:	
Engineer:	
Date:	
Approved <input type="checkbox"/> Approved as Noted <input type="checkbox"/> Not Approved <input type="checkbox"/>	