

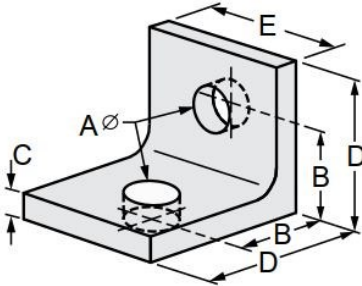


G-STRUT 4100 13th Street SW, Canton OH 44710

Phone: 866.997.8788 – Fax: 330.477.0626

www.gregorystrut.com

STEEL SIDE BEAM BRACKET – SERIES W735



Size Range: 3/8" through 3/4" rod sizes.

Material: Carbon steel.

Finish: Plain.

Ordering: Specify rod size; pipe size; finish and series #.

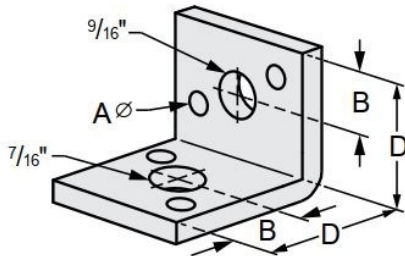
Function: Designed to be fastened to side of joist in order to support a hanger rod.

Available In: Electro-Galvanized, 304 & 316 Stainless Steel.

PART #	PIPE SIZE	SIZE (A)	SIZE (B)	SIZE (C)	SIZE (D)	SIZE (E)	MAXIMUM RECOMMENDED LOAD(lbs.)	LBS./100pcs	CARTON QTY.
W735103	3/8"	7/16"	1-1/4"	3/16"	2-1/8"	1-3/4"	300	32	100
W735104	1/2"	9/16"	1-3/8"	1/4"	2-1/8"	1-3/4"	560	38	100
W735105	5/8"	11/16"	1-3/4"	3/8"	2-3/4"	2-1/2"	900	119	50
W735106	3/4"	13/16"	2-1/8"	3/8"	3-1/4"	2-1/2"	900	136	50

All side beam brackets are plain steel. To order other finishes, change the 5th character in the Part # as seen below:
 STAINLESS STEEL (304) = 8
 STAINLESS STEEL (316) = 0
 ELECTRO-GALVANIZED = 2
 Example: **W735203** = ELECTRO-GALV
2

REVERSIBLE SIDE BEAM ANGLE BRACKET – SERIES W736



Size Range: 3/8" or 1/2" rod sizes.

Material: Low Carbon steel.

Finish: Plain & Electro-Galvanized.

Ordering: Finish and series #.

Approval: Complies with Federal Specification A-A-1192A (Type 34) and Manufacturers' Standardization Society ANSI/SP-69 and SP-58 (Type 34).

Function: Designed for attaching hanger rod to the side of beams of walls. Series W736 can accommodate either 3/8" or 1/2" inch rod.

PART #	FINISH	ROD SIZE	SIZE (A)	SIZE (B)	SIZE (D)	MAXIMUM RECOMMENDED LOAD(lbs.)	LBS./100pcs
W736103	PLAIN	3/8" or 1/2"	9/32"	13/16"	2"	500	50
W736203	ELECTRO-GALVANIZED	3/8" or 1/2"	9/32"	13/16"	2"	500	50

PROJECT INFORMATION	APPROVAL STAMP
Project:	Notes:
Address:	
Contractor:	
Engineer:	
Date:	
Approved <input type="checkbox"/> Approved as Noted <input type="checkbox"/> Not Approved <input type="checkbox"/>	