

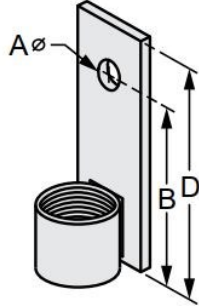


G-STRUT 4100 13<sup>th</sup> Street SW, Canton OH 44710

Phone: 866.997.8788 – Fax: 330.477.0626

[www.gregorystrut.com](http://www.gregorystrut.com)

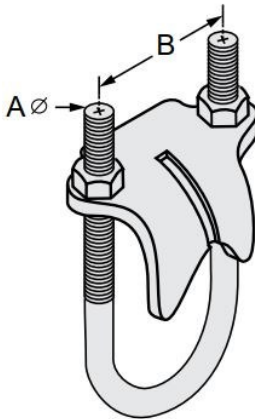
### SEISMIC BRACE – SERIES W752



- Size Range:** 1" tapped pipe size.
- Material:** Low Carbon Steel.
- Finish:** Plain & Electro-Galvanized.
- Ordering:** Specify; finish; and series #.
- Function:** Designed for bracing pipe against sway due to seismic disturbance. Often used in conjunction with Series W510 pipe clamp and Series W735 angle bracket at each end of the sway brace.

PART #	FINISH	TAPPED PIPE SIZE	SIZE (A)	SIZE (B)	SIZE (D)	LBS./100pcs
W752110	PLAIN	1"	9/16"	3-1/4"	4"	51
W752210	ELECTRO-GALVANIZED	1"	9/16"	3-1/4"	4"	51

### RIGHT ANGLE CLAMP – SERIES W770



- Material:** Malleable iron with carbon steel U-bolt.
- Finish:** Hot-Dipped Galvanized
- Ordering:** Specify rod size; finish; length and series #.
- Function:** Designed to anchor pipe or conduit at a right angle to the structural member.
- Available In:** Electro-Galvanized.

All above angle clamps are hot dip galv. To order other finishes, change the 5th character in the Part # as seen below:  
 ELECTRO-GALVANIZED = 2  
 Example: **W770,903** = ELECTRO-GALV  
**2**

PART #	PIPE SIZE	SIZE Ø (A)	SIZE (B)	LBS./100pcs
W770903	3/8"	1/4"	1-5/8"	33
W770904	1/2"	5/16"	2"	41
W770906	3/4"	5/16"	2-1/8"	42
W770910	1"	5/16"	2-3/8"	47
W770912	1-1/4"	5/16"	3"	54
W770914	1-1/2"	5/16"	3-1/2"	57

PART #	PIPE SIZE	SIZE Ø (A)	SIZE (B)	LBS./100pcs
W770920	2"	3/8"	4"	85
W770924	2-1/2"	3/8"	4-3/8"	106
W770930	3"	3/8"	5"	110
W770934	3-1/2"	3/8"	5-1/2"	128
W770940	4"	3/8"	6"	140

PROJECT INFORMATION	APPROVAL STAMP
Project:	Notes:
Address:	
Contractor:	
Engineer:	
Date:	
Approved <input type="checkbox"/> Approved as Noted <input type="checkbox"/> Not Approved <input type="checkbox"/>	